

Influenza in Tropical Regions

Viboud, Cecile; Alonso, Wladimir; Simonsen, Lone

Published in:
PLOS Medicine

DOI:
[10.1371/journal.pmed.0030089](https://doi.org/10.1371/journal.pmed.0030089)

Publication date:
2011

Document Version
Publisher's PDF, also known as Version of record

Citation for published version (APA):
Viboud, C., Alonso, W., & Simonsen, L. (2011). Influenza in Tropical Regions. *PLOS Medicine*, 3(4).
<https://doi.org/10.1371/journal.pmed.0030089>

General rights

Copyright and moral rights for the publications made accessible in the public portal are retained by the authors and/or other copyright owners and it is a condition of accessing publications that users recognise and abide by the legal requirements associated with these rights.

- Users may download and print one copy of any publication from the public portal for the purpose of private study or research.
- You may not further distribute the material or use it for any profit-making activity or commercial gain.
- You may freely distribute the URL identifying the publication in the public portal.

Take down policy

If you believe that this document breaches copyright please contact rucforsk@kb.dk providing details, and we will remove access to the work immediately and investigate your claim.

Perspectives

Influenza in Tropical Regions

Cécile Viboud*, Wladimir J. Alonso, Lone Simonsen

The global burden of influenza on morbidity and mortality is considerable, with an estimated 1 million annual deaths worldwide [1]. In temperate regions, there are clear seasonal variations in the occurrence of influenza, with a marked peak in cold winter months [2]. In contrast, seasonality is less defined in tropical regions—here, there is high background influenza activity throughout the year, on top of which epidemics occur at intermediate months between the influenza season in temperate countries of the Northern and Southern hemispheres. Influenza seasonal patterns in the Americas are summarized in Figure 1, which illustrates the transition between the Northern and Southern hemispheres. Very little is known about exactly how and why the seasonality of influenza varies with latitude. No link with environmental conditions has been convincingly shown, although influenza activity appears to coincide with the rainy season in some tropical countries [3].

Until very recently, the impact of influenza on health was believed to be insignificant in tropical regions. But this impression may be changing, in part thanks to the recent studies by Joseph S. M. Peiris and his colleagues from Hong Kong, one of which appears in this issue of *PLoS Medicine* [4]. Hong Kong is a subtropical city located within the likely epicenter of pandemic influenza in Southeast Asia [5].

Methods for Estimating the Burden of Influenza

Estimating the burden of influenza on hospitalizations and deaths is not straightforward in temperate countries, and it is even less so in tropical countries [2]. Severe clinical outcomes are often caused by secondary bacterial infections, and a primary influenza infection may be unrecognized. Additionally, laboratory confirmation of influenza

infection is rarely conducted. As a result, most influenza-related hospitalizations and deaths are not attributed to influenza on discharge forms and death certificates, and statistical methods are necessary to assess the true burden of influenza on health.

Traditionally, for temperate countries, the impact of a particular influenza epidemic is estimated as the number of “excess deaths” or “excess cases” above a seasonal baseline. This approach relies on identifying periods without influenza activity to generate a model baseline of expected winter deaths (or cases) [6–8]. But the approach fails in tropical regions, where there is no well-defined non-influenza period (Figure 1). An alternative method recently developed by the United States Centers for Disease Control uses virus surveillance data to guide models of burden, assuming a proportional relation between virus activity and the number of hospitalization or deaths attributable to influenza [9,10]. For the US, both traditional and new methods produced very similar estimates of influenza mortality burden (Table 1 and [11,12]). In their Hong Kong study, Peiris et al. appropriately used a variation of the virus-guided modeling approach by linking weekly hospital discharges with weekly prevalence of influenza virus in respiratory specimens sampled in the community [4].

Influenza Burden is Broadly Similar in Hong Kong and the US

Peiris et al. found that the annual influenza-related hospitalization rates are quite similar in Hong Kong and temperate countries (Table 1), confirming their earlier studies [13,14]. In Hong Kong, as in many other countries, the impact of influenza is seen not only on pneumonia and influenza outcomes [12,15], but also on a wider range of chronic health conditions such as diabetes and cardiovascular diseases [12,15]. Peiris et al. also report that influenza-related hospitalization rates vary with age as a U-shaped curve, where young infants

and elderly are at highest risk of severe disease outcome, reminiscent of the age pattern of interpandemic influenza in the US and other temperate countries. However, one difference between Hong Kong and US children stands out: these authors had shown in a previous hospital cohort study that young children in Hong Kong had a hospitalization rate that was roughly 10-fold higher than in the US (Table 1 and [16]). The reasons for this substantial discrepancy are elusive, but may in part be attributed to the notorious difficulty of assessing with accuracy the impact of influenza on children. There is a particularly high background rate of acute respiratory illnesses caused by other respiratory pathogens in this age group. Unfortunately, the authors did not reexamine this apparent discrepancy in the new, larger citywide study published this month [4]—so the question of a true regional difference in pediatric rates of influenza-related pneumonia hospitalizations remains unresolved.

The Need for More Influenza Studies in Tropical Regions

Many research questions about influenza in tropical regions remain

Funding: The Fogarty International Center (National Institutes of Health) provided funding for this article.

Competing Interests: The authors declare that no competing interests exist.

Citation: Viboud C, Alonso WJ, Simonsen L (2006) Influenza in tropical regions. *PLoS Med* 3(4): e89.

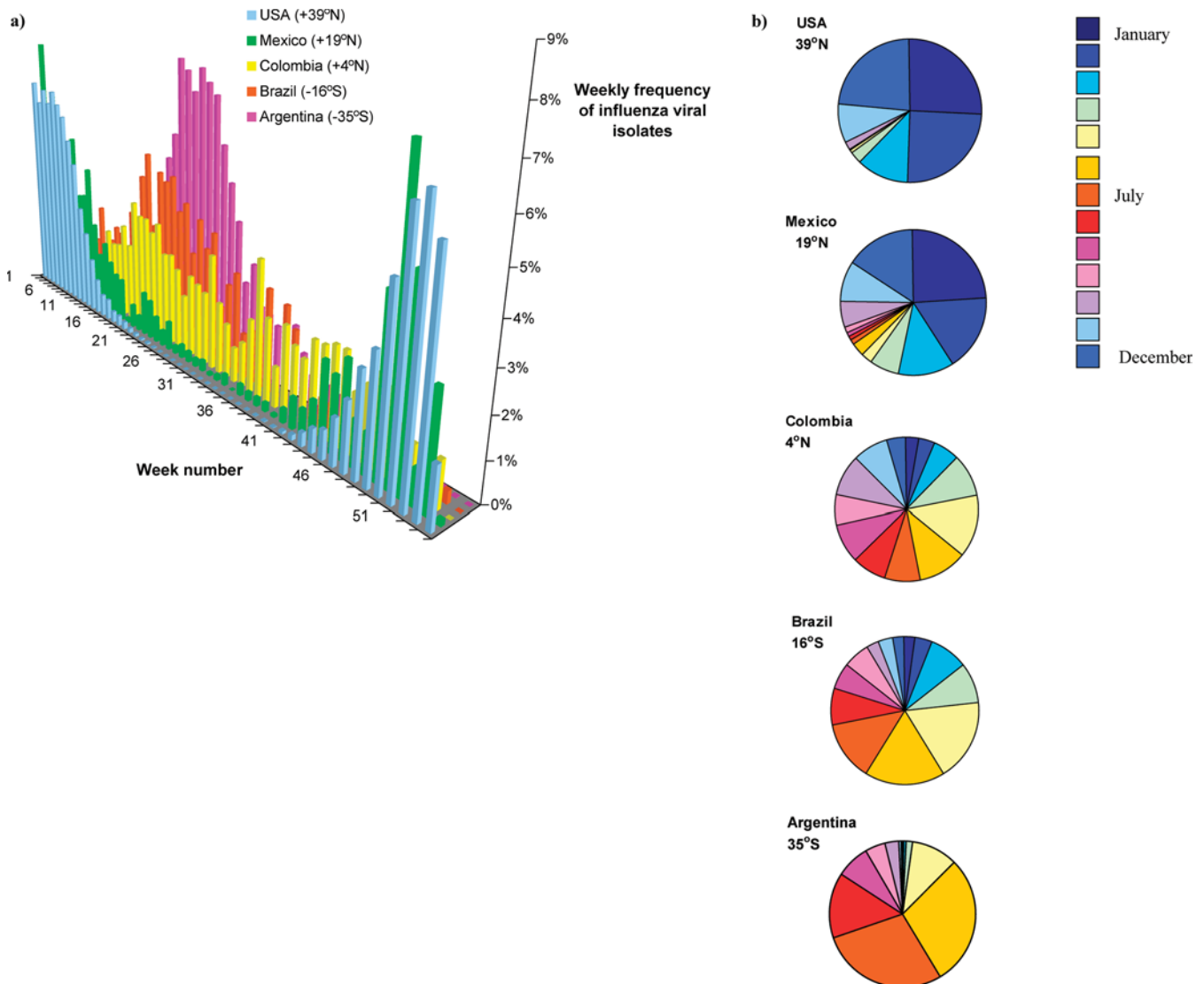
DOI: 10.1371/journal.pmed.0030089

This is an open-access article distributed under the terms of the Creative Commons Public Domain declaration which stipulates that, once placed in the public domain, this work may be freely reproduced, distributed, transmitted, modified, built upon, or otherwise used by anyone for any lawful purpose.

Cécile Viboud and Wladimir J. Alonso are at the Fogarty International Center, National Institutes of Health, Bethesda, Maryland, United States of America. Wladimir J. Alonso is also at Origem Scientific Consultancy, Florianópolis, Brazil. Lone Simonsen is at the National Institute of Allergy and Infectious Diseases, National Institutes of Health, Bethesda, Maryland, United States of America.

* To whom correspondence should be addressed. E-mail: viboudc@mail.nih.gov

The Perspectives section is for experts to discuss the clinical practice or public health implications of a published article that is freely available online.



DOI: 10.1371/journal.pmed.0030089.g001

Figure 1. Comparison of Influenza Seasonal Patterns in Temperate and Tropical Countries in the Americas (From Lat +39°N to -35°S)

The latitude of the capital city is indicated for each country in the legend.

(A) Weekly distribution of influenza laboratory isolates (from week 1 to week 52; weekly frequency (y-axis) is calculated as the weekly number of isolates divided by the annual number of isolates).

(B) Weekly numbers of isolates were aggregated over four-week periods to show a (nearly) monthly distribution of influenza circulation. Each color represents a different month (color bar on the right). Note the transition in seasonal patterns from north to south, ranging from marked seasonal winter activity centered around January in the US, to uniform circulation throughout the year in Colombia and again, strong winter epidemics center around July in Argentina.

Influenza viral surveillance data compiled from WHO Flunet.

unanswered. For instance, Hong Kong is a wealthy subtropical city, with a higher per-capita gross domestic product than Australia or New Zealand. Thus, the present Hong Kong study cannot inform us about the impact of influenza in poor tropical countries, where the severity of infections is likely compounded by malnutrition, limited supplies of antibiotics to treat secondary bacterial infections, and limited access to hospital care.

Modeling the influenza burden in tropical countries relies on good-quality virus surveillance data. And

because of large year-to-year variations in the impact of influenza, modeling also depends on the availability of several years' worth of data. Since influenza surveillance efforts were only recently initiated in tropical countries, studies of the influenza burden are generally of short duration (five years in the study by Peiris et al. [4]). The information generated so far during a period mostly dominated by more pathogenic influenza A (H3N2) viruses may not reflect the average influenza experience in Hong Kong [13]. An additional shortcoming of

the virus-driven modeling approach is that it cannot study past epidemics and pandemics for which no viral surveillance data was collected. Furthermore in this approach, deaths or hospitalizations attributed to influenza are directly proportional to the intensity of virus activity, and therefore, week-to-week variations in virus isolation rates should truly reflect changes in disease prevalence and not sampling error. Laboratory surveillance needs to be strengthened before modeling of disease burden becomes feasible in most tropical countries [1].

Table 1. Comparison of the Average Annual Burden of Influenza on Hospitalization and Death in Recent Years in Hong Kong and the US

Age Group	US Annual Mortality/100,000		Hong Kong Annual Mortality/100,000		US Annual Hospitalizations/100,000		Hong Kong Annual Hospitalizations/100,000	
	All Causes	Pneumonia and Influenza	All Causes	Pneumonia and Influenza	All Causes	Pneumonia and Influenza	All Causes	Pneumonia and Influenza
All ages	15 ^a 20 ^b	2.9 ^a 3.0 ^b	16 ^c	4.1 ^c	115 ^d	52 ^d	78 ^e	29 ^e
Under 5 years old	1.3 ^a 1.3 ^b	0.3 ^a 0.2 ^b			114 ^d 300 ^f	26 ^d	1,400 ^g	
Under 65 years old	3.0 ^a 4.2 ^b	0.4 ^a 0.5 ^b			56 ^d	23 ^d 26 ^h	45 ^e	18 ^e
Over 65 years old	100 ^a 132 ^b	22 ^a 22 ^b	136 ^c	39 ^c	621 ^d	300 ^d 260 ^h	267 ^e 303 ⁱ	102 ^e 130 ⁱ

In the US, the influenza season runs from November to April. In Hong Kong, the influenza season matches the calendar year, since there is year-round circulation of influenza and seasonal patterns are less defined.

^aTraditional seasonal regression model applied to US national vital statistics, 1980–2001, as in [8].

^bModel guided by viral surveillance data [10].

^cModel guided by viral surveillance data [13].

^dModel guided by viral surveillance data [9].

^eModel guided by viral surveillance data [4].

^fCohort study [23].

^gCohort study [16].

^hTraditional seasonal regression model [2].

ⁱModel guided by viral surveillance data [14].

DOI: 10.1371/journal.pmed.0030089.t001

Finally, more studies are needed to elucidate influenza seasonal patterns across a large range of latitudes, representing several tropical countries in both hemispheres. Of particular interest is the long-standing question of persistence: does influenza persist in temperate countries all year long (through undetectable chains of transmission in summer) or is it reintroduced from the Tropics each year at the beginning of winter? A combination of enhanced virus surveillance and sequence analysis of the viral genome of circulating strains is an important avenue for future research to address this question, and Hong Kong may be an essential sampling site in this respect.

Resolving this question is of paramount importance to vaccine composition and influenza control in tropical regions. Because of year-round influenza activity, it is not clear whether the Northern Hemisphere or Southern Hemisphere recommended composition should be used, and what the optimal timing for the vaccination campaign would be. Indeed, the influenza vaccination strategy may have to be tailored to each individual tropical region, based on local prevalence, timing, cycling of influenza strains, and how they match the strains circulating in temperate areas.

Who Should Be Vaccinated?

Peiris and colleagues' study implies that influenza is an underappreciated

public health issue in tropical regions—indeed, influenza vaccine coverage is far lower in Hong Kong than in most developed countries with a temperate climate [17]. The authors argue for wider use of influenza vaccines in the elderly and chronically ill; however, this strategy has not been associated with any measurable reduction in influenza-related mortality in the US [8], likely in part because of reduced responsiveness to the vaccine in the elderly [18]. In the US and Europe, moving toward universal vaccination is now being discussed as a strategy to further reduce the impact of influenza in high-risk groups by indirect means. Vaccinating schoolchildren may be especially beneficial in this regard, since they are the main spreader of influenza in schools and households [19–21]. If the unusually high impact of influenza in young Hong Kong children is real, then this would be an additional argument for vaccinating schoolchildren in this city, as preschoolers are likely to contract influenza from their older siblings [22]. ■

Acknowledgments

We thank John Sentz of the Fogarty International Center for editorial assistance.

References

1. Pan American Health Organization [PAHO] (2004) Final report of the XVI Meeting on Vaccine Preventable Diseases of the Pan American Health Organization. Washington (District of Columbia): PAHO. Available: http://www.paho.org/English/AD/FCH/IM/TAG16_FinalReport_2004.pdf. Accessed 19 January 2006.

2. Simonsen L (1999) The global impact of influenza on morbidity and mortality. *Vaccine* 17: S3–S10.
3. Shek LP, Lee BW (2003) Epidemiology and seasonality of respiratory tract virus infections in the tropics. *Paediatr Respir Rev* 4: 105–111.
4. Peiris M, Wong CM, Yang L, Chan KP, Leung G, et al. (2006) Influenza associated weekly hospitalization in a subtropical city. *PLoS Med* 3: e121. DOI: 10.1371/journal.pmed.0030121
5. Shortridge KF (1997) Is China an influenza epicentre? *Chin Med J (Engl)* 110: 637–641.
6. Collins S, Frost W, Gover M, Sydenstricker E (1930) Mortality from Influenza and Pneumonia in 50 Large Cities of the United States 1910–1929. *Public Health Rep* 45: 2277–2328.
7. Serfling R (1963) Methods for current statistical analysis of excess pneumonia-influenza deaths. *Public Health Rep* 78: 494–506.
8. Simonsen L, Reichert TA, Viboud C, Blackwelder WC, Taylor RJ, et al. (2005) Impact of influenza vaccination on seasonal mortality in the US elderly population. *Arch Intern Med* 165: 265–272.
9. Thompson WW, Shay DK, Weintraub E, Brammer L, Bridges CB, et al. (2004) Influenza-associated hospitalizations in the United States. *JAMA* 292: 1333–1340.
10. Thompson WW, Shay DK, Weintraub E, Brammer L, Cox N, et al. (2003) Mortality associated with influenza and respiratory syncytial virus in the United States. *JAMA* 289: 179–186.
11. Simonsen L, Taylor R, Viboud C, Dushoff J, Miller M (2006) US flu mortality estimates are based on solid science. *BMJ* 332: 177–178.
12. Dushoff J, Plotkin JB, Viboud C, Earn DJ, Simonsen L (2005) Mortality due to influenza in the United States—An annualized regression approach using multiple-cause mortality data. *Am J Epidemiol* 163: 181–187.
13. Wong CM, Chan KP, Hedley AJ, Peiris JS (2004) Influenza-associated mortality in Hong Kong. *Clin Infect Dis* 39: 1611–1617.
14. Yap FH, Ho PL, Lam KF, Chan PK, Cheng YH, et al. (2004) Excess hospital admissions for pneumonia, chronic obstructive pulmonary disease, and heart failure during influenza seasons in Hong Kong. *J Med Virol* 73: 617–623.
15. Reichert TA, Simonsen L, Sharma A, Pardo SA, Fedson DS, et al. (2004) Influenza and the

- winter increase in mortality in the United States, 1959–1999. *Am J Epidemiol* 160: 492–502.
16. Chiu SS, Lau YL, Chan KH, Wong WH, Peiris JS (2002) Influenza-related hospitalizations among children in Hong Kong. *N Engl J Med* 347: 2097–2103.
 17. van Essen GA, Palache AM, Forleo E, Fedson DS (2003) Influenza vaccination in 2000: Recommendations and vaccine use in 50 developed and rapidly developing countries. *Vaccine* 21: 1780–1785.
 18. Goodwin K, Viboud C, Simonsen L (2005) Antibody response to influenza vaccination in the elderly: A quantitative review. *Vaccine*. E-pub ahead of print.
 19. Viboud C, Boelle PY, Cauchemez S, Lavenue A, Valleron AJ, et al. (2004) Risk factors of influenza transmission in households. *Br J Gen Pract* 54: 684–689.
 20. Longini IM Jr, Halloran ME (2005) Strategy for distribution of influenza vaccine to high-risk groups and children. *Am J Epidemiol* 161: 303–306.
 21. Jordan R, Connock M, Albon E, Fry-Smith A, Olowokure B, et al. (2005) Universal vaccination of children against influenza: Are there indirect benefits to the community? A systematic review of the evidence. *Vaccine*. E-pub ahead of print.
 22. Glezen WP, Taber LH, Frank AL, Gruber WC, Piedra PA (1997) Influenza virus infections in infants. *Pediatr Infect Dis J* 16: 1065–1068.
 23. Neuzil KM, Mellen BG, Wright PF, Mitchel EF Jr, Griffin MR (2000) The effect of influenza on hospitalizations, outpatient visits, and courses of antibiotics in children. *N Engl J Med* 342: 225–231.

